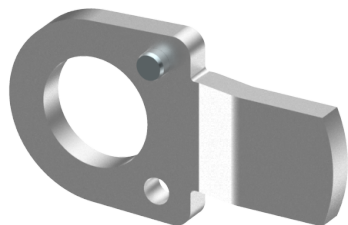


## Pêne

T09.918.150.27

D=28mm / K=1mm zu Verschluss-Zylinder 06.246 / 06.249



 Les produits peuvent différer des images présentées

### Utilisation

pour cylindre de verrouillage 11.249.00.

### Matériel livré

- 1 languette

## De construction identique

- T09.918.151.27 - D = 40 / K = 1
- T09.918.152.27 - D = 50 / K = 1
- T09.918.153.27 - D = 28 / K = 2
- T09.918.154.27 - D = 40 / K = 2
- T09.918.155.27 - D = 50 / K = 2
- T09.918.156.27 - D = 28 / K = 3
- T09.918.157.27 - D = 39.5 / K = 3
- T09.918.158.27 - D = 50 / K = 3
- T09.918.159.27 - D = 28 / K = 4
- T09.918.160.27 - D = 39 / K = 4
- T09.918.161.27 - D = 50 / K = 4
- T09.918.162.27 - D = 28 / K = 5
- T09.918.163.27 - D = 38.5 / K = 5
- T09.918.164.27 - D = 40 / K = 5
- T09.918.165.27 - D = 50 / K = 5
- T09.918.166.27 - D = 28 / K = 6
- T09.918.167.27 - D = 38 / K = 6
- T09.918.168.27 - D = 40 / K = 6
- T09.918.169.27 - D = 50 / K = 6
- T09.918.170.27 - D = 28 / K = 7
- T09.918.171.27 - D = 37 / K = 7
- T09.918.172.27 - D = 40 / K = 7
- T09.918.173.27 - D = 50 / K = 7
- T09.918.174.27 - D = 28 / K = 8
- T09.918.175.27 - D = 37 / K = 8
- T09.918.176.27 - D = 40 / K = 8
- T09.918.177.27 - D = 50 / K = 8
- T09.918.178.27 - D = 28 / K = 10
- T09.918.179.27 - D = 35 / K = 10
- T09.918.180.27 - D = 40 / K = 10
- T09.918.181.27 - D = 50 / K = 10
- T09.918.182.27 - D = 28 / K = 12
- T09.918.183.27 - D = 33 / K = 12
- T09.918.184.27 - D = 40 / K = 12
- T09.918.185.27 - D = 50 / K = 12
- T09.918.186.27 - D = 28 / K = 14
- T09.918.187.27 - D = 31.5 / K = 14
- T09.918.188.27 - D = 40 / K = 14
- T09.918.189.27 - D = 50 / K = 14
- T09.918.190.27 - D = 30 / K = 16
- T09.918.191.27 - D = 40 / K = 16
- T09.918.192.27 - D = 50 / K = 16
- T09.918.193.27 - D = 30 / K = 18
- T09.918.194.27 - D = 40 / K = 18
- T09.918.195.27 - D = 50 / K = 18
- T09.918.196.27 - D = 30 / K = 20
- T09.918.197.27 - D = 40 / K = 20
- T09.918.198.27 - D = 50 / K = 20

## Caractéristiques

- Type: languette coudée
- Dimension D (mm): 28
- Dimension K (mm): 1
- Référence: 1061-6Q1